



SUKRITHI
PADAVINANGADY MANGALORE

BEJAI MANGALORE

Contact PH 0824 – 2223382

Mob : +919606198298

Email : projects@citadeldevelopers.com



Citadel Developers



+919606198298





Citadel Developers is a real estate company established in the year 1996 with an aim to promote and develop properties into well designed, aesthetically built and affordable dwelling units. The three childhood friends-turned-partners, who head this company, have nurtured it with the strength of their friendship and their expertise & experience. Together with a group of well qualified staff and other associates and collaborators, Citadel has been consistently providing the best facilities and amenities required for a luxurious and comfortable lifestyle, while maintaining the highest quality standards and on-schedule delivery of all its projects. The testimonies of satisfied customers and the continuous interest shown by new clients in investing with Citadel are the biggest recognition and achievement.

TRANQUILITY GUARANTEED

Everyone dreams of settling in a locality that is peaceful yet convenient. What better than a home that is surrounded by nature and is only a short distance away from all essential services. At Sukrithi, you can enjoy the cool mountain breeze, gaze at the beautiful valley below and watch the trees shedding their leaves. The fragrance of a rural setting in an urban locality is definitely a feeling to be experienced. Rejuvenate yourself every time you are at home in Sukrithi.





SUKRITHI

LOCATION

Sukrithi is located at Padavinangady, Mangalore, along the Airport Road close to the Mangalore International Airport, places of worship, commercial stores, hospitals, educational institutions and eateries are located only a short distance from Sukrithi.





DESIGN

The design of Sukrithi is very unique in terms of its planning, good design practices, cross ventilation, eco friendliness and its architectural form.

Each residential unit has natural lighting and all rooms have positive ventilation. The apartments are planned in such a manner so as to ensure enough privacy to each ergonomic unit.

There are 9 spacious apartments on each floor and they are connected by ample corridor spaces. The corridors have open passages that provide abundant light and wind.

A very simple but elegant form has been adopted. The elevation of the building has a unique texture with different shades of Mother Earth, giving it a very pleasant and organic form.

The common spaces are planned to include an open gym, party terraces and unbound spaces for community interactions.





COURTYARDS

A central courtyard which gives a private green recreational space for the apartment has been provided at Sukrithi. This creates a microclimate inside the building and brings light into the interiors. Garden planters at different levels give an exquisite effect to the courtyard. The tree terraces in every floor are a unique feature, providing sky lobbies for recreation. Sukrithi brings the breathtaking beauty of nature to your doorstep.

FACILITIES

Residents of Sukrithi will admire the superlative apartments, as they include a multitude of high end features and luxurious amenities.





INSPIRED LIVING

The flats at Sukriti are superlative in aesthetics and functionality. They have been designed to fulfill the needs and comforts of every member of the family. Rather than just providing living solutions, we at Citadel aim to bring together like-minded families and create a safe, happy and united community. It is very crucial to live harmoniously with nature and minimise the burden on Mother Earth. Our aim is to focus on minimising the depletion of natural resources and help families in having a peaceful and realistic lifestyle.



FAMILY AND COMMUNITY

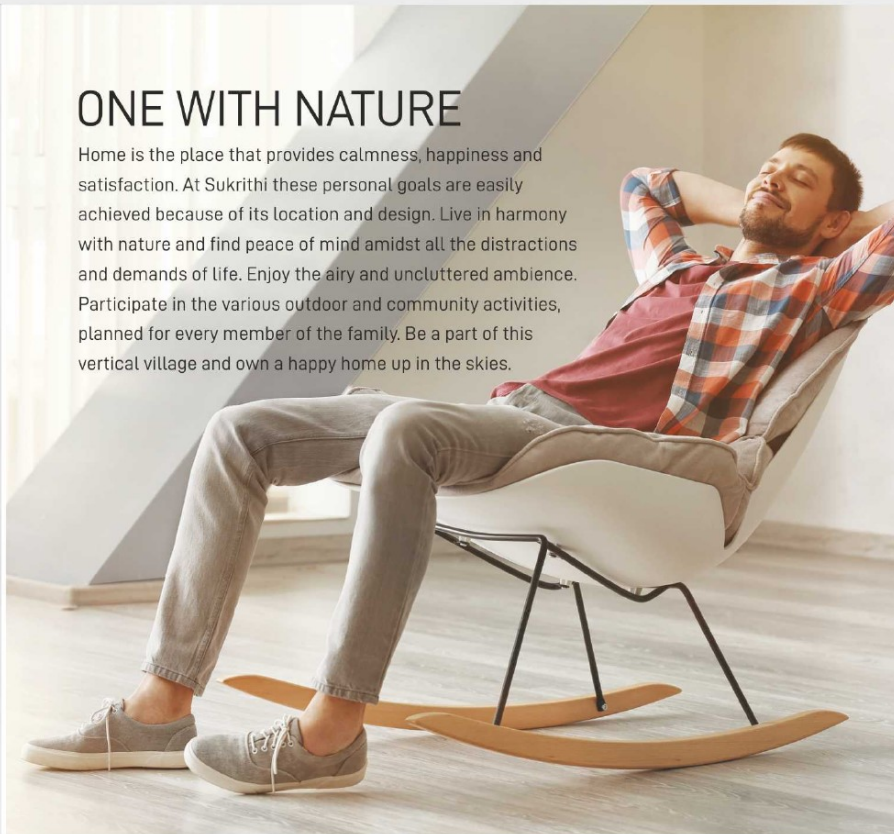
Family means to feel secure, to have someone you can count on, to share a place you can proudly call your home.

At Sukrithi the aesthetics of the apartment, the expanse of the open spaces and courtyards, the natural greenery around, all contribute towards making every family here happy and content. And when such happy families live together, you have a community that is loving and caring towards each other



ONE WITH NATURE

Home is the place that provides calmness, happiness and satisfaction. At Sukrithi these personal goals are easily achieved because of its location and design. Live in harmony with nature and find peace of mind amidst all the distractions and demands of life. Enjoy the airy and uncluttered ambience. Participate in the various outdoor and community activities, planned for every member of the family. Be a part of this vertical village and own a happy home up in the skies.



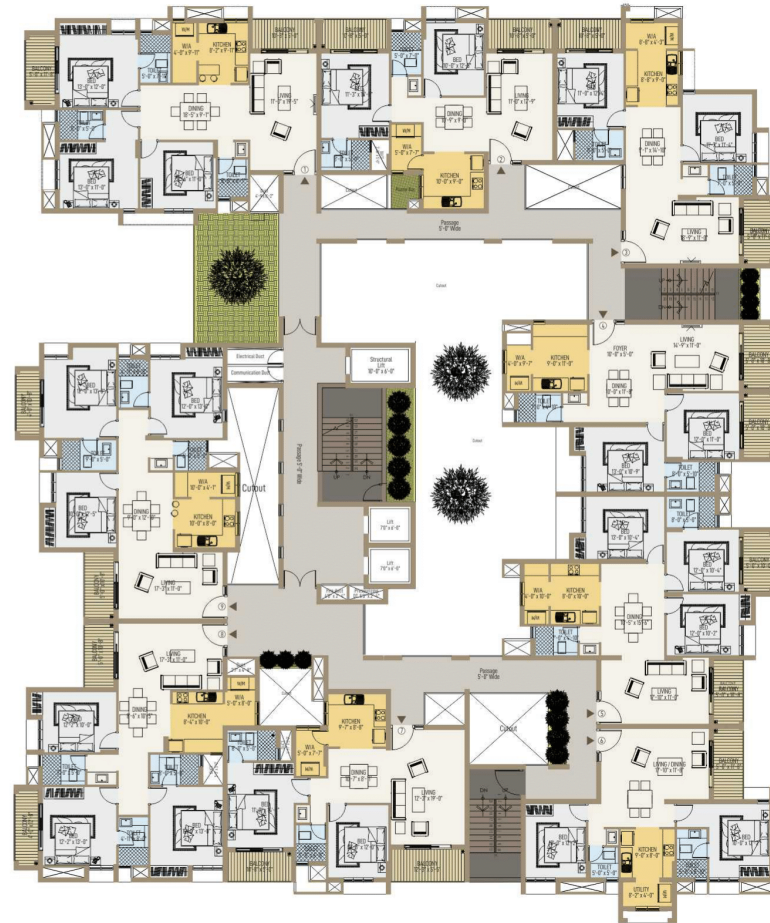
GROUND FLOOR PLAN



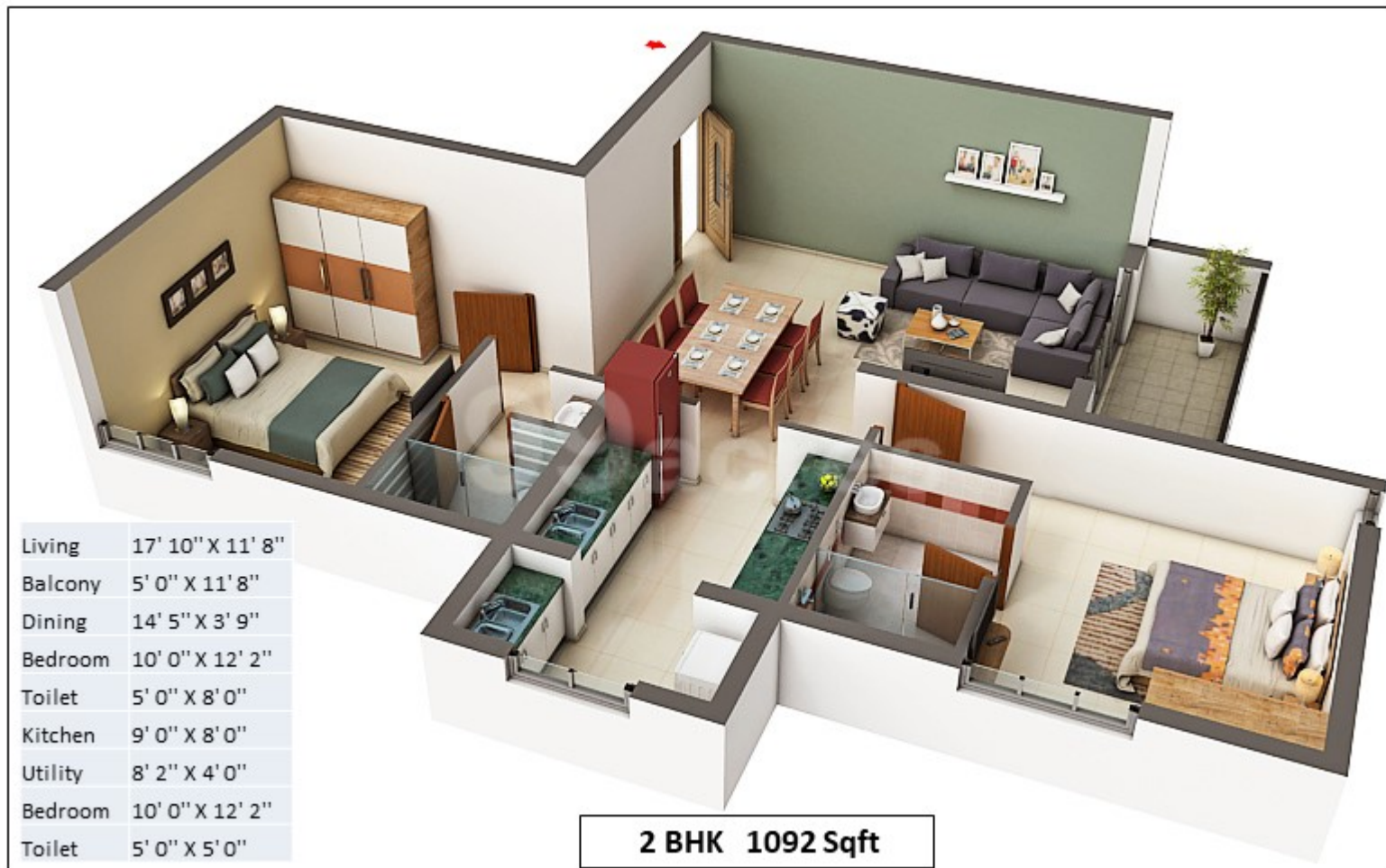
- ▶ Lobby
- ▶ Gymnasium
- ▶ Board room
- ▶ 3 Apartments
- ▶ Recreational area
- ▶ Children's play area
- ▶ Commercial block

FLAT	TYPE	SALEABLE AREA SFT
6	2 BHK	1092.00
7	2 BHK	1296.00
8	3 BHK	1585.00

TYPICAL FLOOR PLAN



FLAT	TYPE	SALEABLE AREA SFT
1	3 BHK	1648.00
2	2 BHK	1243.00
3	2 BHK	1275.00
4	2 BHK	1316.00
5	3 BHK	1448.00
6	2 BHK	1092.00
7	2 BHK	1296.00
8	3 BHK	1585.00
9	3 BHK	1626.00







Living 18' 9" X 11' 0"

Balcony 5' 0" X 11' 0"

Dining 9' 1" X 14' 10"

Bedroom 11' 7" X 11' 4"

Toilet 7' 0" X 5' 0"

Bedroom 11' 0" X 12' 4"

Toilet 8' 0" X 5' 0"

Balcony 10' 8" X 5' 0"

Kitchen 8' 8" X 9' 0"

Wash 8' 8" X 4' 3"

2 BHK 1275 Sqft









Living	17' 3" X 11' 0"	Toilet	7' 0" X 5' 0"
Balcony	5' 0" X 10' 8"	Bedroom	12' 2" X 13' 0"
Dining	8' 6" X 10' 5"	Toilet	4' 11" X 8' 0"
Kitchen	8' 4" X 10' 0"	Balcony	4' 0" X 12' 8"
Wash	5' 0" X 8' 0"	Bedroom	12' 0" X 13' 0"
Bedroom	12' 2" X 10' 0"	Toilet	8' 0" X 5' 0"

3 BHK 1585 Sqft



Living 17' 3" X 11' 0"

Balcony 5' 0" X 10' 8"

Dining 9' 0" X 12' 10"

Kitchen 10' 0" X 8' 0"

Wash 10' 0" X 4' 1"

Bedroom 10' 0" X 12' 5"

Toilet 6' 0" X 5' 0"

Bedroom 12' 0" X 13' 0"

Toilet 4' 11" X 8' 0"

Bedroom 12' 0" X 13' 0"

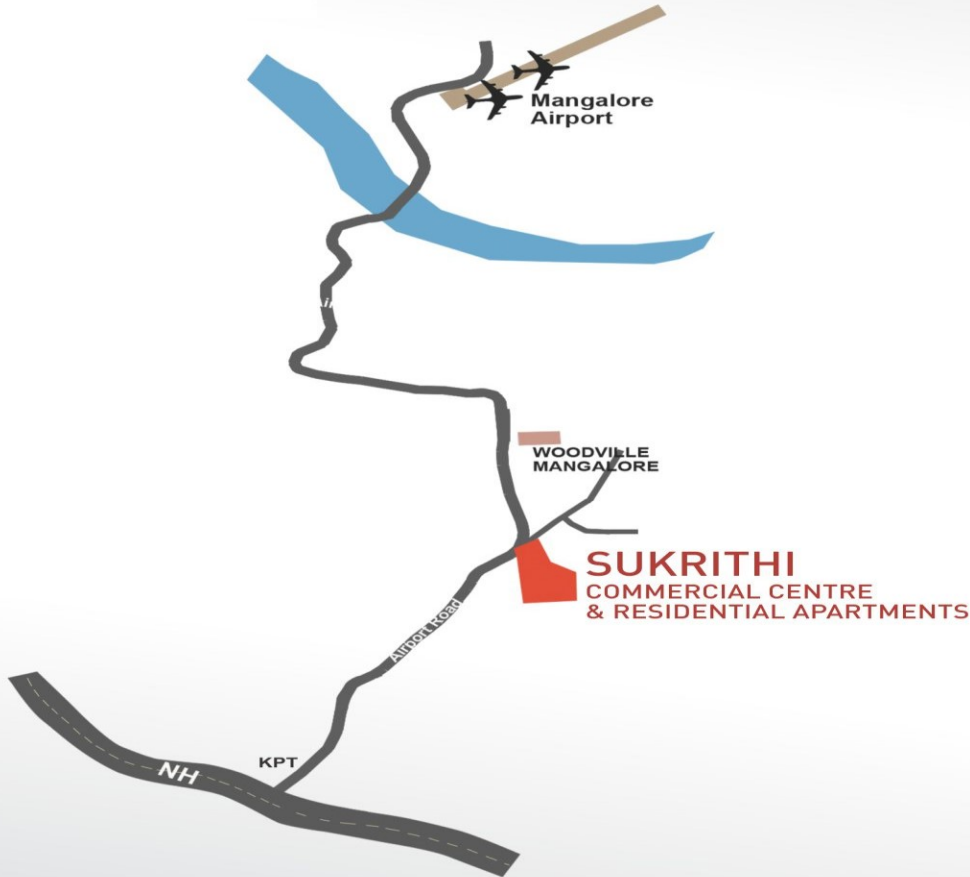
Toilet 9' 0" X 5' 0"

Balcony 4' 0" X 10' 8"

3 BHK 1626 Sqft



LOCATION



NEIGHBOURHOOD

- Public Transport Facility
- Banks : Canara/Corporation/Karnataka
- Markets : Padvinangady/Kavoor Temple: Kavoor Mahalingeshwara
- Temple 2.4 KM/Venkataramana, Mahalasa Temple 400 Mts
- Church: St. Lawrence church Bondel 500 Mts
- Hospitals: A.J Hospital 3.5 KM
- Educational Institutes: BGS institution/Vikas PU college/Mount carmel Central school/St. Joseph Engineering College
- Mangalore International Airport: 7.5 KM
- KSRTC: 5.5 KM
- Railway Station: 7.0 KM
- Shopping Mall/Theatres: 5.5 KM
- Kadri Park: 3.5 KM
- Pilikula biological Park/Golf Club: 7.0 KM

PROMOTERS :



#003, 'SAPHIRE', BEJAI CHURCH ROAD,
BEJAI, MANGALORE. PH: 0824 - 2223382

**Contact: 9945 271 784 \ 9845 345 384
9845 081 469**

projects@citadeldevelopers.com

www.citadeldevelopers.com



/citadel developers



/citadeldevelopers



9606 198 298

PRM KA/ RERA/1257/334 PR 190326/002493